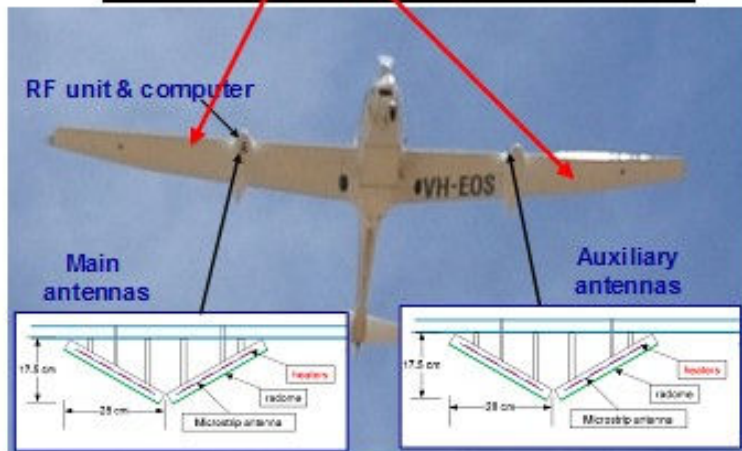
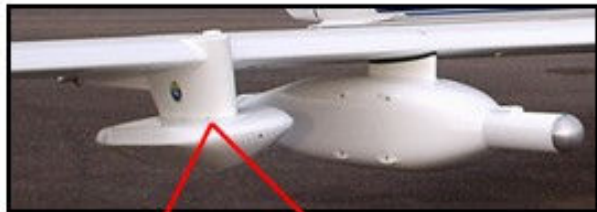


# Polarimetric L-Band Imaging Scatterometer (PLIS – L-Band, 1.26GHz) for soil moisture, vegetation and salinity



THE UNIVERSITY OF MELBOURNE



FLINDERS UNIVERSITY  
ADELAIDE • AUSTRALIA



THE UNIVERSITY OF ADELAIDE  
AUSTRALIA



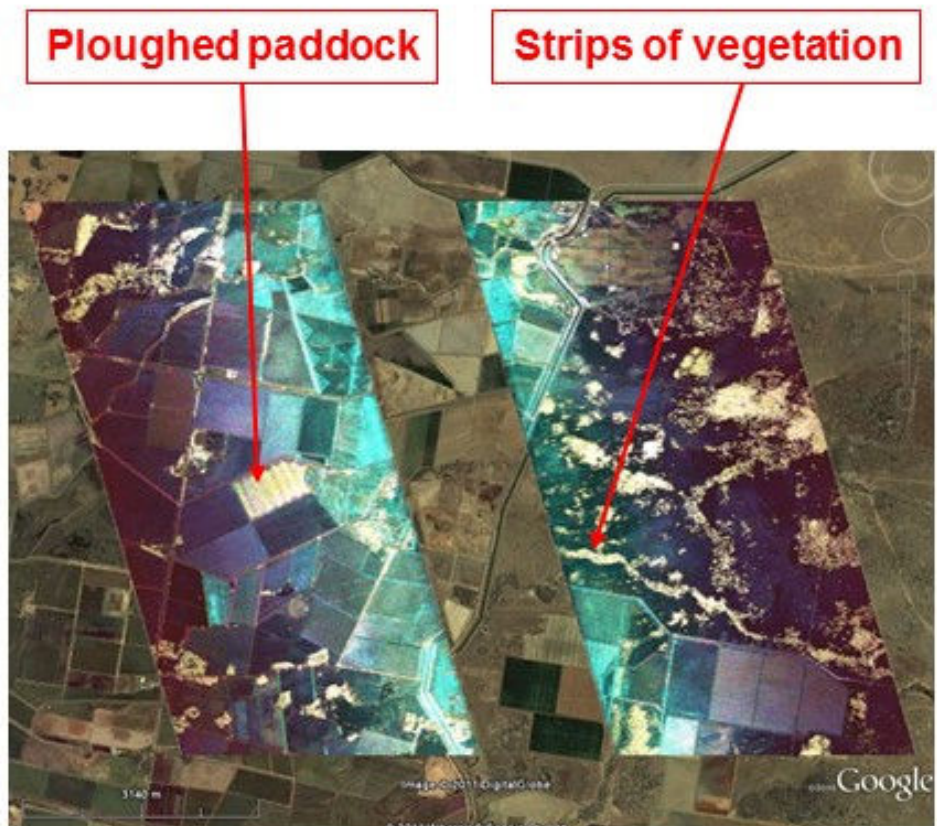
UNSW  
THE UNIVERSITY OF NEW SOUTH WALES  
SYDNEY • CANBERRA • AUSTRALIA



Curtin  
University of Technology



MONASH University



PLIS data overlaid on Google Earth  
(more info – see paper TS-11-6, Walker)